



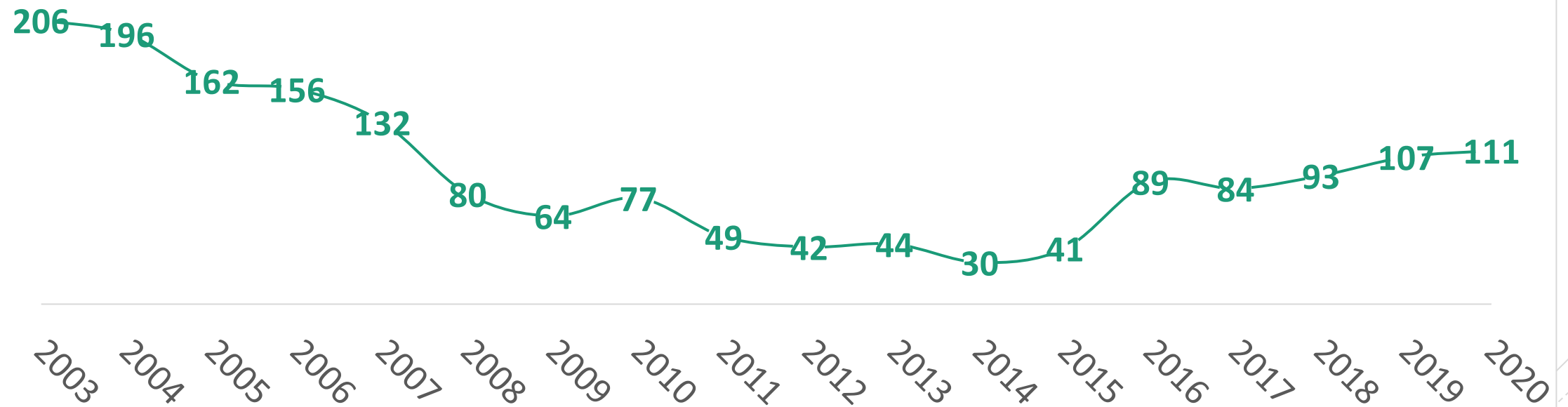
▼ Chasing Malaria in Honiara

Pilot Active Case Detection Program

Dr Edgar Pollard WHO SI

The background

TREND OF ANNUAL PARASITE INCIDENCE PER 1,000 PERSONS IN SOLOMON ISLANDS (2003-2020)



The challenges

- Funding & HR
- Institutional reform to decentralization
- Reporting
- Drug & RDT shortages
- Asymptomatic malaria
- PV relapse





The rationale

- Malaria in Honiara is the key to malaria elimination in the Solomon Islands.
- We need Re-educate around malaria and to start thinking elimination
- We need to try something different
- Unemployed graduates

The what

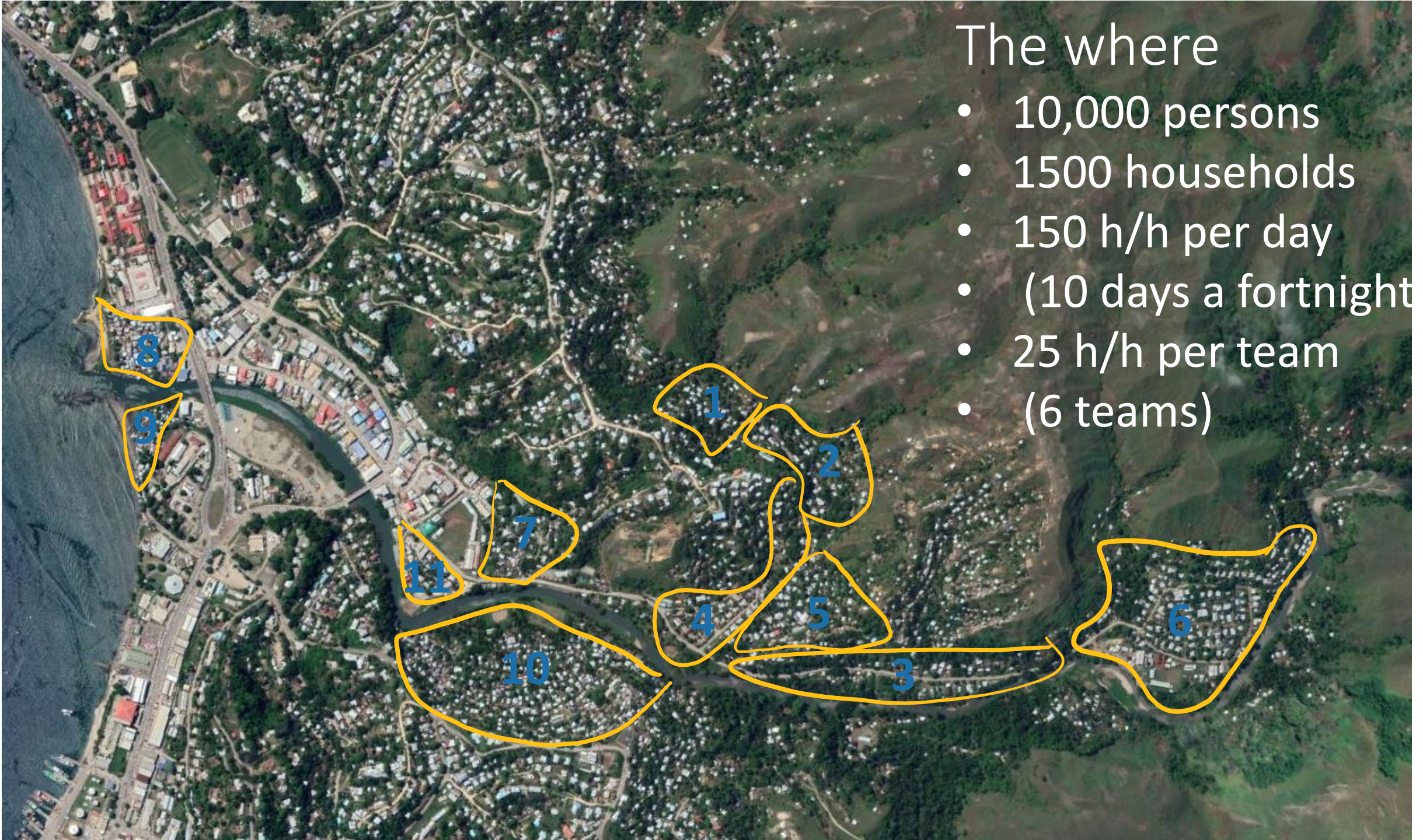
A team based at a clinic serving the surrounding communities to:

- House to house
- Fever hunting
- Test & Treat
- Follow-up treatment
- Household mapping
- Information sharing
- Community outreach
- Checking bed-nets
- Fortnightly schedule

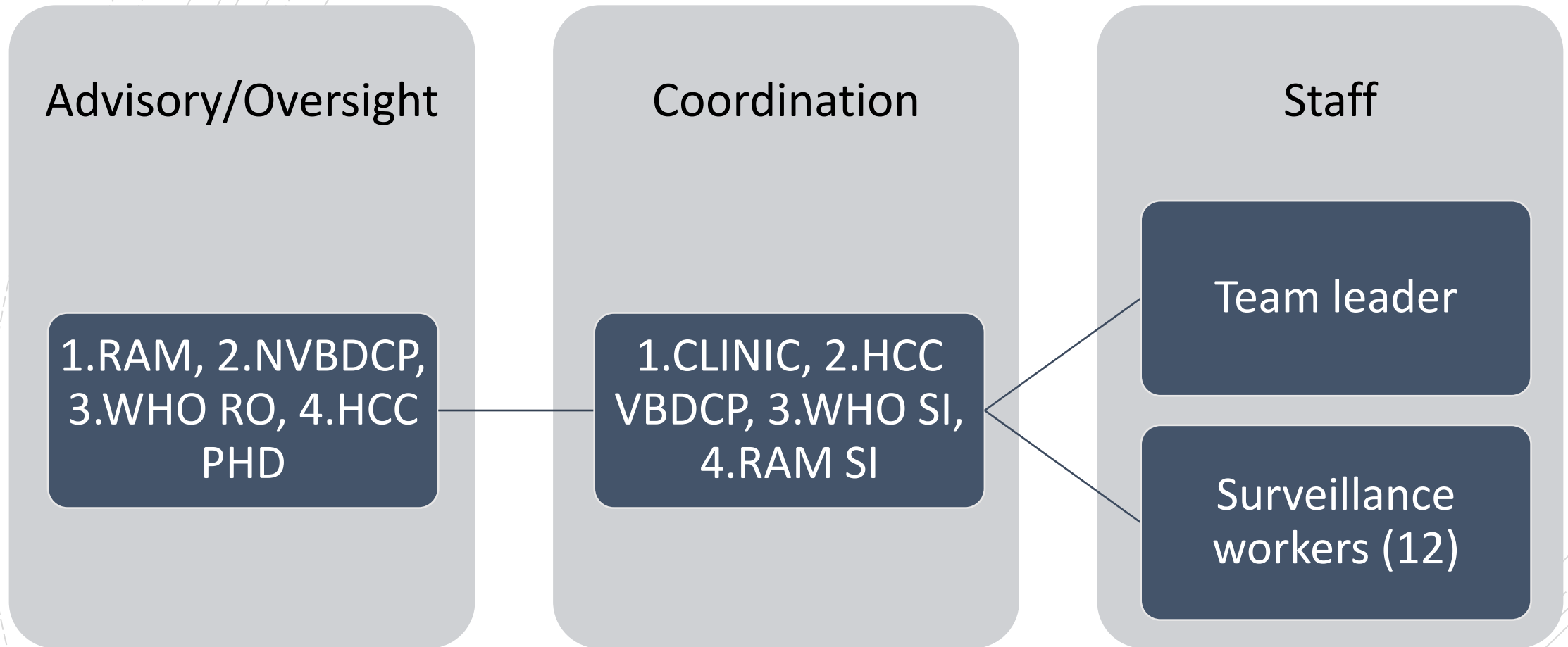


The where

- 10,000 persons
- 1500 households
- 150 h/h per day
- (10 days a fortnight)
- 25 h/h per team
- (6 teams)



The who





The innovation

- Collaboration
- Active vs Passive
- Fever hunting
- DOT
- G6PD
- A database

The future

- A RAWCS global grant
- A model toward elimination





▼ Tagio tumas